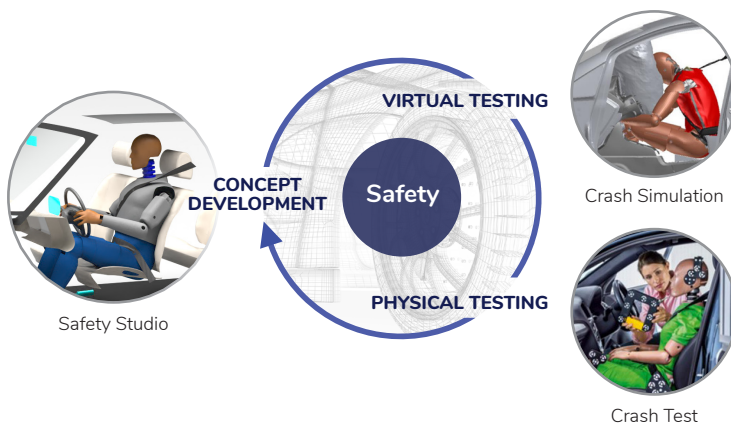


# SAFETY STUDIO

CONNECTING CONCEPTUAL DESIGN  
AND TESTING IN SAFETY

## CAD analysis and optimization of vehicle interiors regarding safety requirements

Currently, conceptual development and testing in safety design are done in separate departments using different tools without sufficient communication, leading to lower product quality and larger development resources. Our integrated tools enable seamless collaboration between engineers at all stages of development.



## Customer challenges

- » Early safety design is inefficient as current procedures don't support test device positioning variations according to worldwide standards
- » Lower safety design quality in early concept phase due to lacking features in existing tools for concept assessment and optimization
- » Lower product quality and higher development time and costs due to inconsistent device data between concept and testing tools, risking costly redesigns later

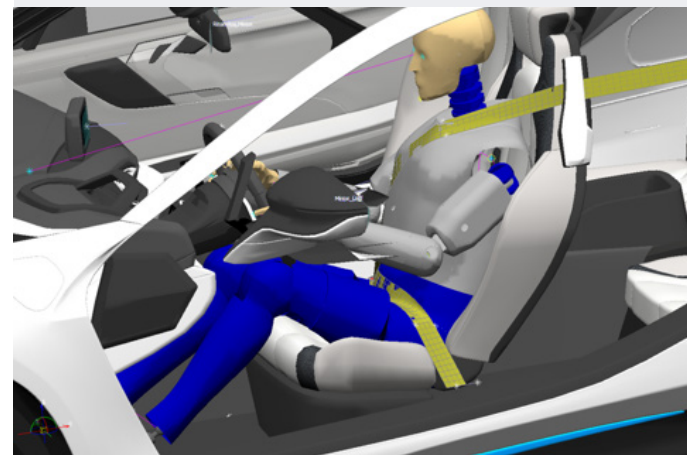
## Key benefits

- » Improved early safety design efficiency through proper test device positioning per worldwide standards
- » Higher early safety design quality through features for assessing and optimizing concepts by safety criteria
- » Higher product quality and reduced development time and costs via consistent device data sharing between concept development and testing tools



## Key Features

- » Interior design analysis and optimization with respect to ATD dummy positions & safety criteria
- » Automatic, consistent and reproducible positioning of ATD dummy models in CAD environments
- » Bi-directional transfer of ATD dummy posture data to crash simulation (FEM) and testing systems



## CONTACT US

Humanetics Digital Europe GmbH  
Europallee 10 D-67657 Kaiserslautern  
P +49 631 343593-00  
contact.hdeu@humaneticsgroup.com