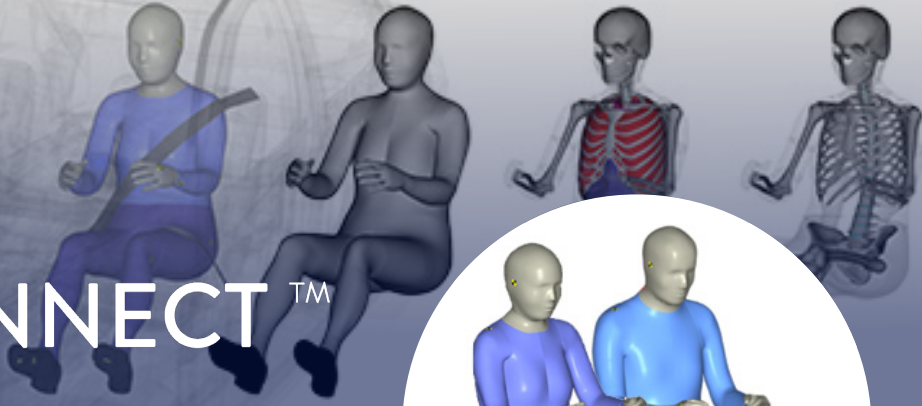
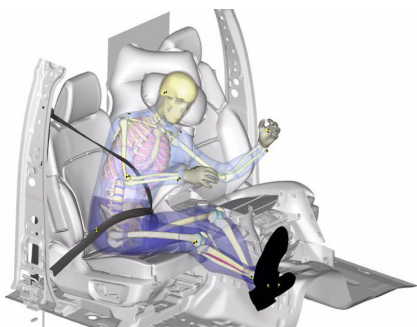


# HBM CONNECT™



## The Ideal Balance of Performance and Efficiency for Comprehensive Safety Testing

HBM Connect™, the next evolution in human body modeling, offers unparalleled stability, ease of use, and biofidelic response, essential for refining and optimizing safety systems. Engineered using crucial data points and extensive expertise in physical and virtual ATD development alongside comprehensive injury data, our models equip product development engineers with efficient and consistent analysis from refining vehicle safety designs to optimizing ergonomics.



“The [HBM Connect™] model is, as expected, much faster than existing HBM models. Kinematics are good.”

-New HBM Connect™ User

HBM Connect™, an exact footprint of the human body, serves as the digital twin for your physical ATD fleet, simulating responses in crash or impact scenarios.


These models, created using a combination of anatomical data, medical imaging, and physical testing, provide product engineers comprehensive insight into how various vehicle designs and safety systems influence human body responses, facilitating informed decision-making in advancing vehicle safety.


HBM Connect™ fulfills both current and future NCAP certification requirements, empowering organizations to confidently achieve NCAP ratings.


 <b>EASE OF USE</b>	<b>40%</b> <b>RUNTIME SAVINGS</b>	<b>★★★★★</b> <b>NCAP READY</b>
---	--------------------------------------	-----------------------------------


HBM Connect™ is currently available in 50th Male and 5th Female versions with new family members coming soon.

## KEY FEATURES


 **Robust and User Friendly**  
HBM Connect™ is stable and easy to use for product development of safety applications.

 **Easily Integrates into Vehicle Models**  
HBM Connect™ integrates into vehicle models, offering fast iterations for the safety system optimization.

 **Uses Appropriate Materials and Anatomical Details**  
HBM Connect™ uses appropriate material characterization and anatomical details resulting in reliable responses needed for product development applications in crash simulations.

 **Validated Using a Vast Human Impact Dataset**  
HBM Connect™ is validated using a vast variety of human impact tests to ensure accuracy and biofidelity.

 **Future Safety Applications**  
HBM Connect™ is built to meet future NCAP certification requirements, the ideal human body model tool for use by the same CAE engineers that are knowledgeable in using ATD FE models.

 **Closed Loop System**  
HBM Connect™ ensures consistency and accuracy of data when transitioning from virtual to physical products.

