

ATD MANAGEMENT™

Subscription Update & Maintenance Service

Critical Update & Maintenance Services are now offered to extend the life, functionality, and security of ATD Management™ software. Failure to update ATDM may lead to inoperability or security issues if future OS updates are applied.

Humanetics ATD Management™ (ATDM) certification software simplifies the task of data collection, data analysis, and report-generation related to the certifying of crash test dummies and supplemental instruments. ATDM is used in dummy calibration labs throughout the world to streamline the data acquisition and post processing requirements equivalent to what is used by the world-leading ATD manufacturer in the production of our wide range of safety tools.

A Little History

Humanetics ATDM software has been an industry standard in certification labs across the globe for 25 years. Customers who originally acquired ATDM received a perpetual license to continue using the software in their labs without limits, which included occasional updates.

What's Changed?

Since the original inception, ATDM is now over two decades old, its scalability and stability have limitations as operating systems and technology have changed over the years. ATDM's original operating system, Windows XP, is no longer supported by Microsoft. The software therefore requires key updates. To ensure ATDM's future usability, we needed to update the application's database tool and the underlying developer framework. This upgrade enhances the stability and security of ATDM for more modern computer operating systems like Windows 11. Additionally, regular updates are critical to the software's ongoing functionality.

Introducing Subscription Maintenance

ATDM is essential for many customers in their daily workflow. To ensure that ATDM remains an essential building block of our customer's workflow we are introducing a new maintenance agreement designed to offer an improved service experience, making the certification of crash test dummies efficient and smooth.



What Does This Mean for Existing Users?

Moving forward, to receive new build revisions and ongoing updates concerning performance, security, and content, users will need to enter into a maintenance agreement.

Those choosing not to subscribe to this maintenance can continue with their present ATDM version, but Humanetics cannot ensure the ongoing reliable operation of the software. Technical support may be purchased on a per incident basis, but any software updates require the before-mentioned maintenance plan.

Welcome to ATD Management v3.0

The new release of ATDM available to subscription customers in v3.0. Non-subscription versions of ATDM end at v2.48.27. The benefits and highlights of v3.0 are detailed on the next page.

(Con't)

ATDM v.3.0 Offers Enhanced Functionality

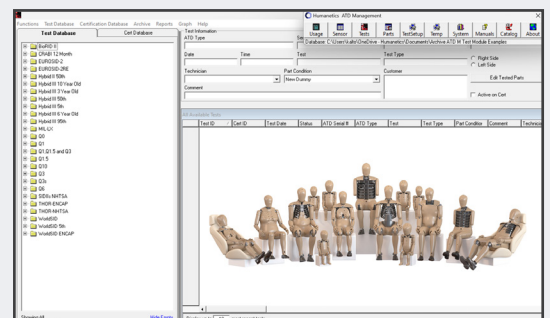
In addition to upgraded architecture, enhanced security against cyber threats, and compatibility with the latest operating systems, ATDM v3.0 also boosts usability and value.

ATDM has always allowed the inclusion of new dummy test modules into the software at will, enabling the integration of additional components as supplemental dummy products and tests become available. Users of version 3.0 can anticipate continued access to this most vital feature while receiving the most recent advancements in ATD certification testing.

- New serial number classification fields to identify the various build levels of your components and assemblies within your ATDs.
- New test classifications to label tests to aid the searching and filter of different test types.
- The latest advanced ATD test modules including THOR-50M and THOR-5F certification specifications. Immediate availability of published certification corridors and dummy responses utilizing the latest approved calculation methods.
- Immediate availability of certification corridors of new dummy types such as the WorldSID-5F, THOR-AV, Elderly dummy, etc.

ATDM v3.0 offers new security, support and scalability benefits

- Improved stability and security
- Regular maintenance & updates
- Improved level of support
- Upgradeable to advanced lab management tools such as ATD Baseware™ & ATD Connect™



To learn more and receive an upgrade and annual maintenance quote, please reach out to your account manager.

humaneticsgroup.com/about-us/contact-us