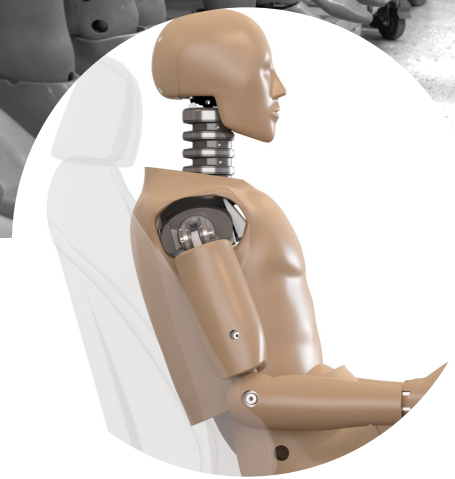


RECOMMENDED SPARE PARTS & CONSUMABLES

HYBRID III 50TH MALE



Having a variety of Hybrid III 50th Male spare parts on hand for quick replacement during an ATD certification or a crash test series is an affordable and efficient way to help manage unexpected needs and regular maintenance requirements.

Importance of ATD Spare Part Inventory

Accidents happen. And within vehicle safety test facilities, they happen on purpose! So there's nothing more frustrating than lacking a critical replacement part for a test dummy that's scheduled for a required re-certification or needed immediately for a crucial test series.

Some of the components that bare the brunt of physical impact and abuse are critical items to have on-hand for quick

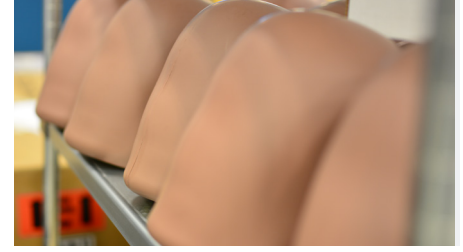
replacement when damaged or worn-out. Many test dummy spares have delivery lead times that could delay your testing if you don't have them available in your local inventory.

To help with your inventory planning, we've put together a list of the most common and consumable components to have readily available for regular and emergency use.

Recommended Hybrid III 50th Male Spare Parts

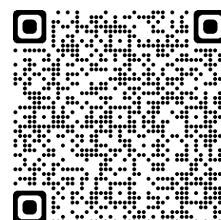
ITEM #	PART NUMBER	DESCRIPTION	QTY
1	1039006	NECK SHIELD (AIR BAG TEST) (FOAM ONLY)	2
2	1717	PIVOT PIN - NECK	1
3	6000156	SHOES, MEN'S OXFORD 11XW MIL-S-13192P (PAIR)	2
4	78051-169-H	CHEST FLESH AND SKIN ASSY. WITH ZIPPER	1
5	78051-188-FT	CLAVICLE LINK, LEFT	1
6	78051-189-FT	CLAVICLE LINK, RIGHT	1
7	78051-198-DN	STOP, LOWER ARM, MOLDED	2
8	78051-225-FT	SCREW, FHCS 10-32X.290 (SPEC)	2
9	78051-228-H	HEAD SKIN, TESTED/CERTIFIED	1
10	78051-231-H	LIFTING RING	1
11	78051-233-FT	PLATE, FRONT RIB END STIFFENER	1
12	78051-234-FT	STRIP, FRONT RIB END THREADED	1

ITEM #	PART NUMBER	DESCRIPTION	QTY
13	78051-235-DN	BUMPER SHOULDER	2
14	78051-236-FT	WASHER, CLAVICLE LINK PIVOT	2
15	78051-237-FT	WASHER/NUT,CLAVICLE LINK PVT 164-0087-02	1
16	78051-240-H	CLAVICLE SPRING STOP H3-50TH	2
17	78051-241-FT	SPACER, CLAVICLE	4
18	78051-242-DN	STOP ASSY - RUBBER, SHOULDER YOKE PIVOT	2
19	78051-245-DN	STOP ASSEMBLY - SHOULDER	2
20	78051-249-DN	WASHER - SHOULDER & ELBOW JOINT SPRING	2
21	78051-253-DN	WASHER - NODDING JOINT	2
22	78051-259-DN	SET SCREW ASSEMBLY	2
23	78051-27-FT	KNEE INSERT (RUBBER), TESTED/CERTIFIED	4



Hybrid III 50th Male Spare Parts List (cont'd)

ITEM #	PART NUMBER	DESCRIPTION	QTY	ITEM #	PART NUMBER	DESCRIPTION	QTY
24	78051-292-FT	T-SHIRT, 100% COTTON STRETCH, SHORT SLEEVE-MEDIUM	2	38	78051-60-H	PELVIS, MOLDED TESTED RANGE OF MOTION	1
25	78051-293-FT	UNDERPANTS, 100% COTTON STRETCH, MEDIUM	2	39	78051-610-H	ANKLE BUMPER	2
26	78051-301-FT	CABLE, NECK	1	40	78051-6-H	KNEE FLESH/SKIN, MOLDED, RIGHT	1
27	78051-304-FT	SUPPORT, RIB REAR	6	41	78051-9-DN	STOP STERNUM	1
28	78051-336-H	NECK, MOLDED, TESTED/CERTIFIED	1	42	78051-RS-DN	RIB SET, COMPLETE, TESTED/CERTIFIED	1
29	78051-351-8550-H	NODDING BLOCK, 84 - 87 A, HI DAMP	4	43	79051-30-DN	SHOULDER BOLT, MODIFIED, LH & RH	1
30	78051-356-DN	STOP, STERNUM	2	44	79051-32-DN	WASHER, LH & RH	1
31	78051-498-1-DN	FEMUR BUMPER, LEFT , HIII 50TH	1	45	79051-33-DN	COMPRESSION WASHER, LH & RH	2
32	78051-498-2-DN	FEMUR BUMPER, RIGHT, HIII 50TH	1	46	79051-34-H	ROTATION STOP COVER	2
33	78051-52-H	ABDOMINAL INSERT	1	47	79051-35-DN	ROTATION STOP ARM, LH & RH	2
34	78051-5-H	KNEE FLESH/SKIN, MOLDED, LEFT	1	48	A-1672-DN	STOP PIN RETAINER	2
35	78051-600-H	FORTY-FIVE DEGREE FOOT ASSEMBLY, MOLDED, LEFT	1	49	A-1886-DN	FOOT ATTACHMENT BOLT	2
36	78051-601-H	FORTY-FIVE DEGREE FOOT ASSEMBLY, MOLDED, RIGHT	1	50	A-1887-DN	LEG ATTACHMENT BOLT	2
37	78051-608-DN	HEEL PAD FOAM	4	51	A-1888-DN	ANKLE FRICTION PAD	2



Find out more about ATD Services

Scan the QR code or visit: bit.ly/atd-services