

UFOpro

UFOpro

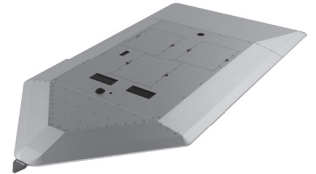
The standard UFOpro is the default version of the UFO; with its low overrun height of 98mm and swappable batteries, it is designed for Euro NCAP ADAS testing. The standard UFOpro is available with an optional ABS system and as a Heavy Duty Version. The UFOpro Heavy Duty has the equipment of an standard UFOpro, but with added robustness and equipped with reinforced ramps and top cover. The UFOpro Heavy Duty can be run over by a car as well as by a commercial vehicle. An additional set of batteries can be purchased separately.

UFOpro Black Series

With a maximum speed of 100kph including a GVT dummy, the **UFOpro Black Series** is a step up from the standard UFOpro. It has an increased gear ratio as well as a specific control algorithm for high speeds. Like all UFOs, the UFOpro Black Series is available with an optional ABS system. Both the UFOpro Black Series and the UFOpro share a similar mechanical design, so that an UFOpro can easily be upgraded to an UFOpro Black Series.

Arrow Ramps

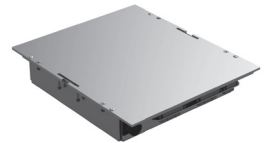
Can be swapped with standard front ramp for side impact testing of cars.



See the Arrow Ramps in action.

Additional Lithium Power Pack

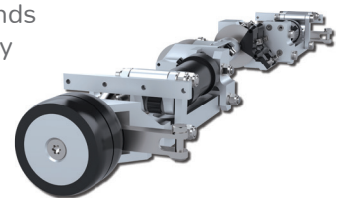
Extra power pack allows ongoing testing without downtime for charging batteries.



See the fast and easy battery swap.

Anti-Lock Braking System (ABS)

The UFO platform's ABS extends tire life, saving time and money in addition to reducing waste



See the ABS in action.



See the UFOpro in action.

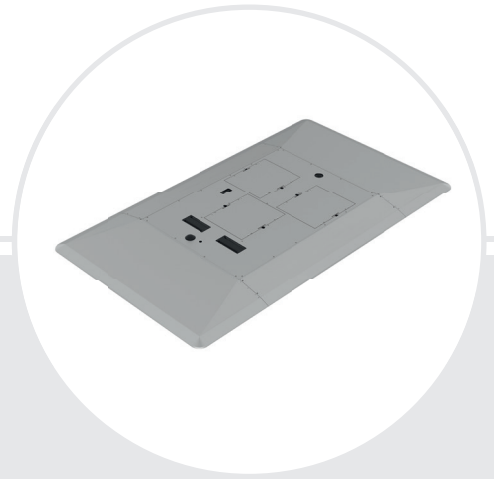
UFOpro

UFOpro SPECIFICATIONS

Maximum Power	25kW
Power Electronic	450A
Battery	2 Lithium power packs incl. 3 built-in battery slots
Maximum speed	80 kph
Maximum acceleration	3m/s ² (up to 20kph)
Controlled deceleration	6m/s ²
Transportation size	1605 x 1100mm
Test ready size	2950 x 1690mm
Carrying weight	126kg
Test ready weight	244kg

UFOpro BLACK SERIES SPECIFICATIONS

Maximum Power	30kW
Power Electronic	450A
Battery	3 Lithium power packs incl. 3 built-in battery slots
Maximum speed	100 kph
Maximum acceleration	3m/s ² (up to 20kph)
Controlled deceleration	6m/s ²
Transportation size	1605 x 1100mm
Test ready size	2950 x 1690mm
Carrying weight	126kg
Test ready weight	264kg



The UFOpro is available in different models with variable add-on options to meet any customer testing needs.

The UFOpro conforms to the following scenarios

- » AEB – C2C
- » AEB – VRU (with arm extension)
- » FCW – C2C
- » FCW – VRU (with arm extension)
- » ELK (oncoming-overtaking)
- » AES
- » ESS
- » REAR AUTOMATIC BRAKING
- » BLIND SPOT DETECTION
- » BLIND SPOT INTERVENTION
- » PEDESTRIAN AEB
(with VRU Kit)
- » INTERSECTION SAFETY ASSIST
- » OPPOSING TRAFFIC SAFETY ASSIST
- » TRAFFIC JAM ASSIST

.... and many more scenarios thanks to the flexibly configurable GUI.