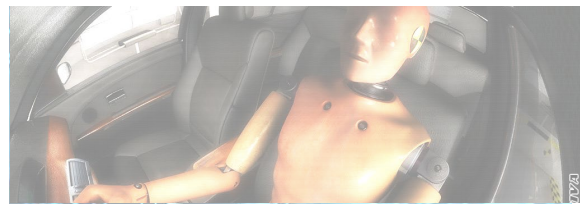


Humanetics Innovative Solutions, Inc.
WorldSID 50th Percentile Advanced Male Dummy
W50-00000



Parts Catalog





For information on Humanetics products, please visit our web site at www.humaneticsatd.com

or contact:

Humanetics Innovative Solutions

23300 Haggerty Road

Farmington Hills, Michigan

48335 USA

Tel: +1 248 778 2000

Fax: +1 248 778 2001

No part of this publication may be reproduced, stored in a retrieval system or transmitted in any form or by any means, electronic, photocopying, recording, mechanical or otherwise, without the express written consent of Humanetics Innovative Solutions.

Copyright © 2017 Humanetics Innovative Solutions, All rights reserved.

The information in this catalog is furnished for informational use only, and is subject to change without notice. Humanetics Innovative Solutions assumes no responsibility or liability for any errors or inaccuracies that may appear in this catalog.

Table of Contents

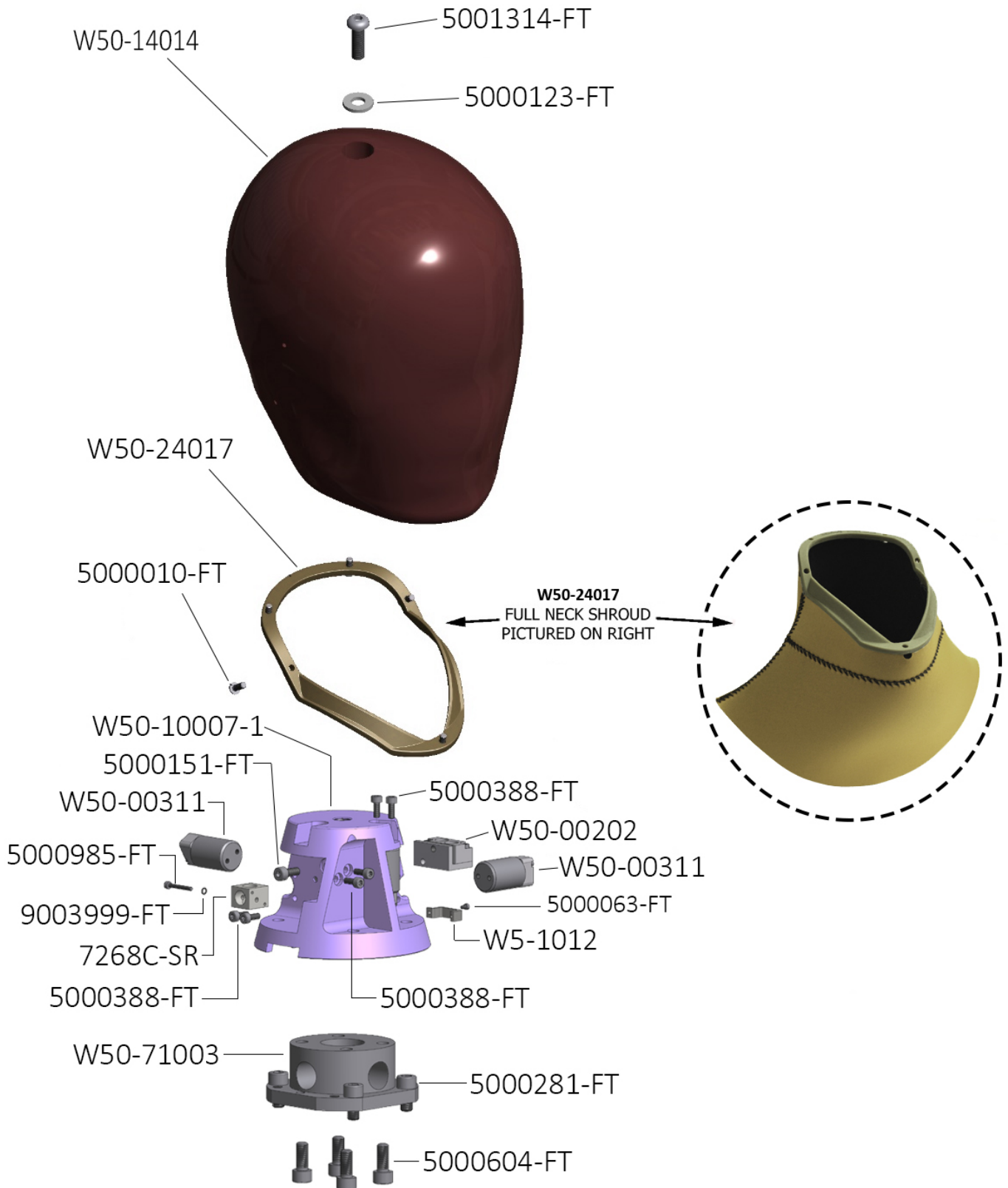
Head Assembly	4-5
Neck Assembly.....	6-7
Thorax Assembly	8-12
Spine Box Assembly.....	13-14
Pelvis Assembly	15-17
Leg Assembly	18-19
Femoral Neck Assembly	20
Knee Assembly	21
Lower Leg Assembly	22-23
Ankle Assembly	24-25
Clothes	26
Misc. Tools.....	27

Background

WorldSID stands for Worldwide harmonized Side Impact Dummy, a crash test dummy to be used for the assessment of vehicle occupant injury risk in lateral impact. It is designed to be used as a standard, regulatory test tool as well as a research tool for a multitude of impact conditions.

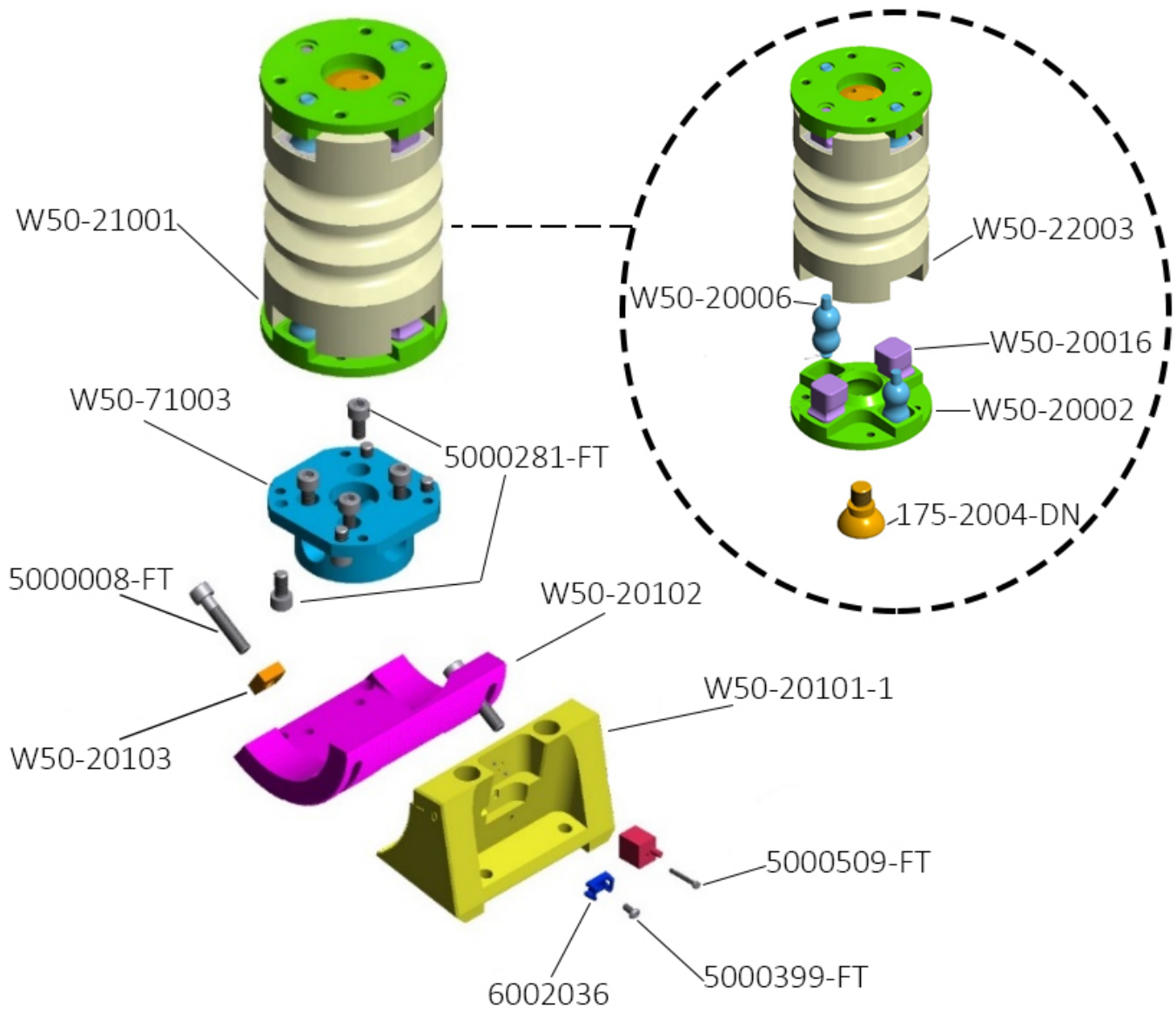
The WorldSID production version represents an average mid-size adult male. Anthropometry specifications are based on an extensive set of dimensions and inertia data, which are found to be representative of the world population of vehicle occupants. The target biofidelity of the dummy is good to excellent, according to a large set of dynamic response specifications as defined by ISO. The WorldSID includes instrumentation which not only allows assessing injury risk according to practically all known side impact injury criteria, but also allows evaluating occupant-vehicle-restraint interactions. Many other specifications, such as repeatability, reproducibility, durability, sensitivity, and handling, have all been considered in the design. For more information regarding the dummy development, please go to www.worldSID.org.

Head Assembly



ITEM	QTY	PART NO.	DESCRIPTION
	1	W50-10000	HEAD ASSEMBLY, TESTED & CERTIFIED
1	1	W50-10007-1	HEAD CORE
2	1	W50-14014	HEAD, MOLDED, TESTED AND CERTIFIED
3	3	W50-00311	MOUNT KIT, ARS
4	1	W50-71003	NECK LOAD CELL STRUCTURAL REPLACEMENT
5	1	W50-24017	NECK SHROUD ASSEMBLY
6	1	5000123-FT	M8 FLAT WASHER PLAIN ZINC
7	1	5001314-FT	M8 X 1.25 X 30 LG. BHCS
8	4	5000281-FT	M6 X 1 X 12 LG SHCS
9	5	5001083-FT	M4 X 0.7 X 10 LG. BHCS
10	5	5000985-FT	M2 X 0.4 X 16 LG. SHCS
11	1	W50-00202	MOUNT KIT, IES 1402 TILT SENSOR
12	4	5000604-FT	M6 X 1 X 14 LG. SHCS
13	1	W5-1012	BRACKET, CABLE RETAINER
14	2	5000063-FT	M1.6 X 0.35 X 3 LG. SHCS
15	6	5000388-FT	M3 X 0.5 X 8 LG. SHCS
16	1	7268C-SR	TRIAXIAL ACCELEROMETER S.R.
17	1	9003999-FT	#2 FLAT WASHER PLAIN L SS

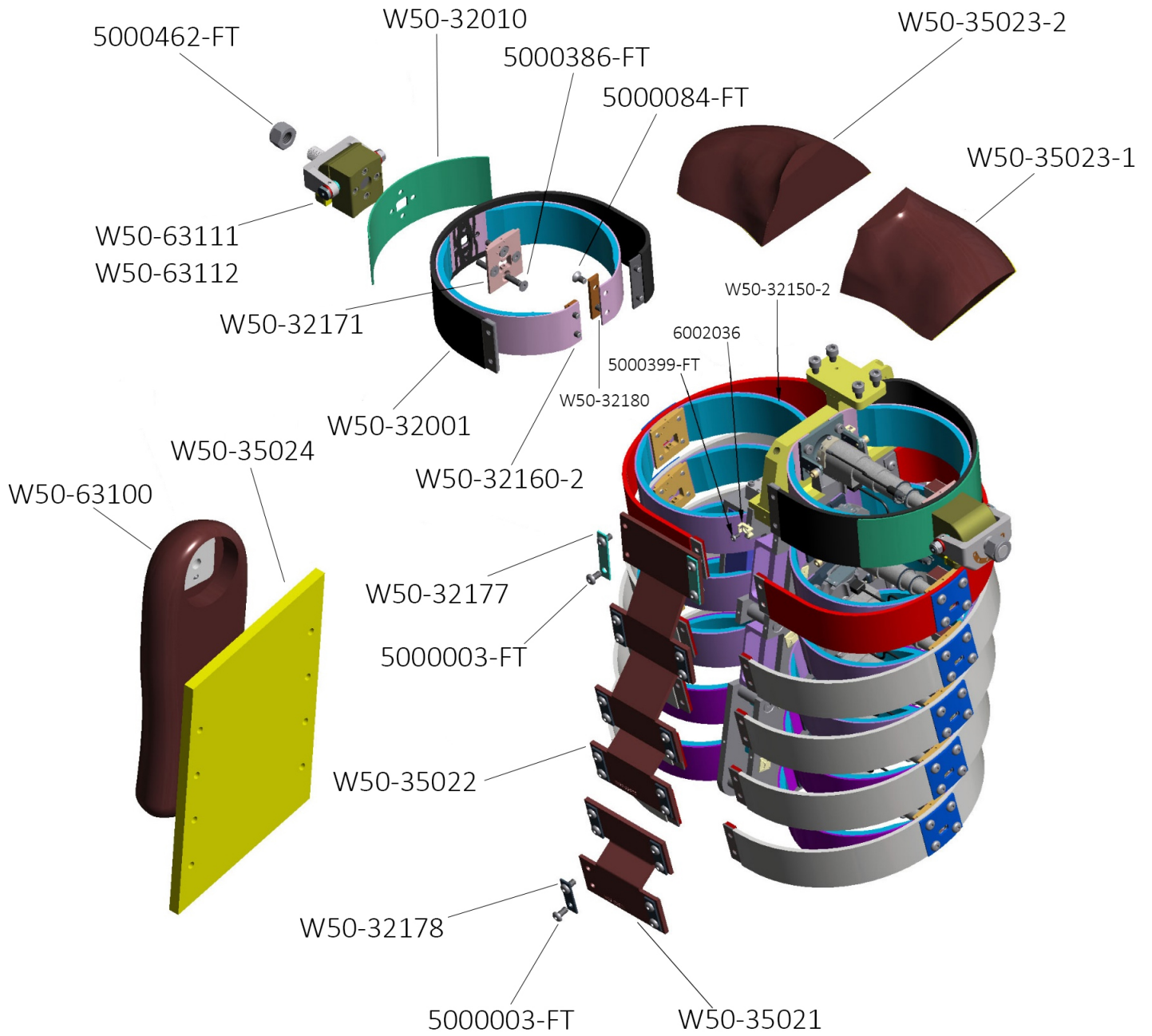
Neck Assembly

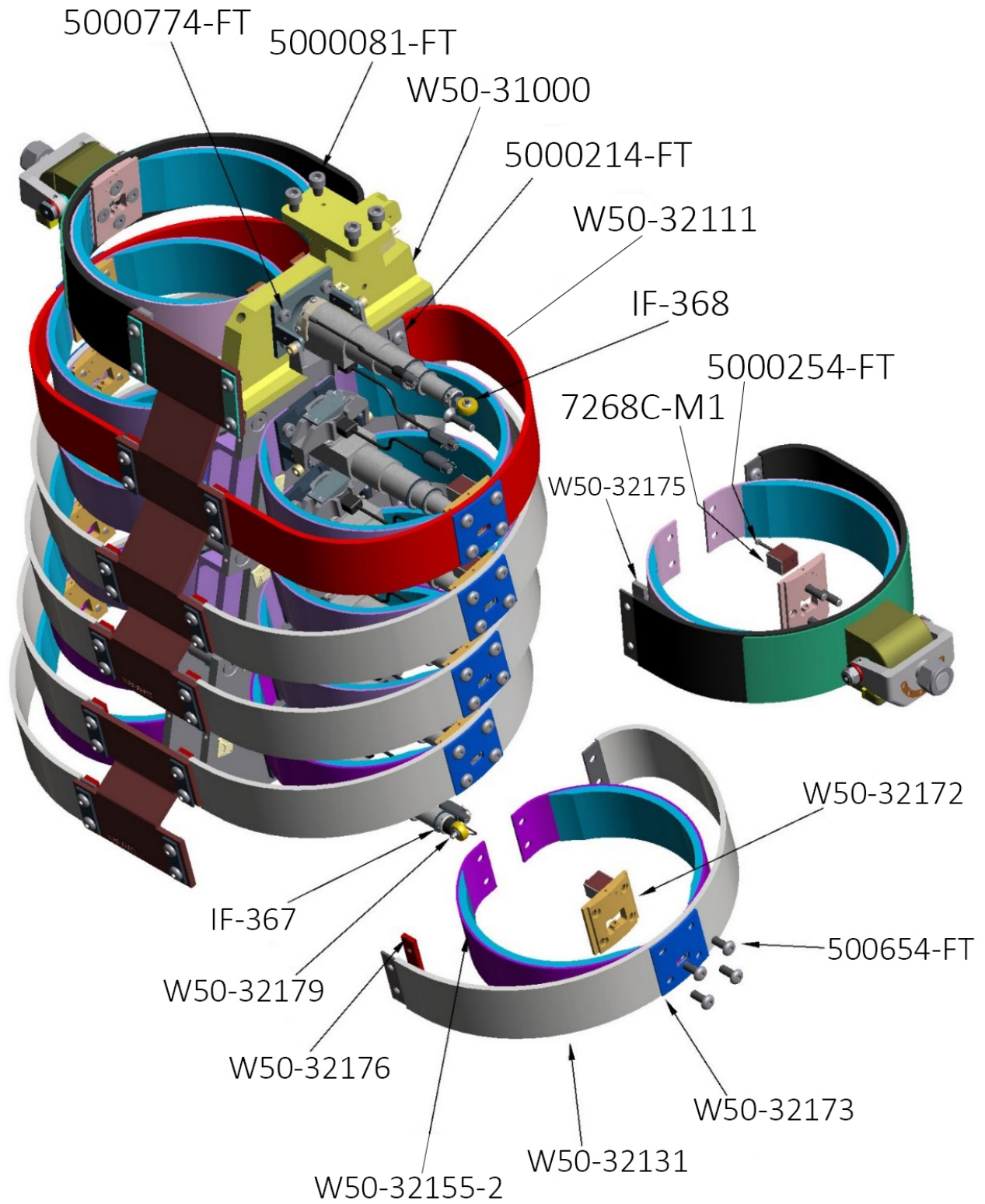


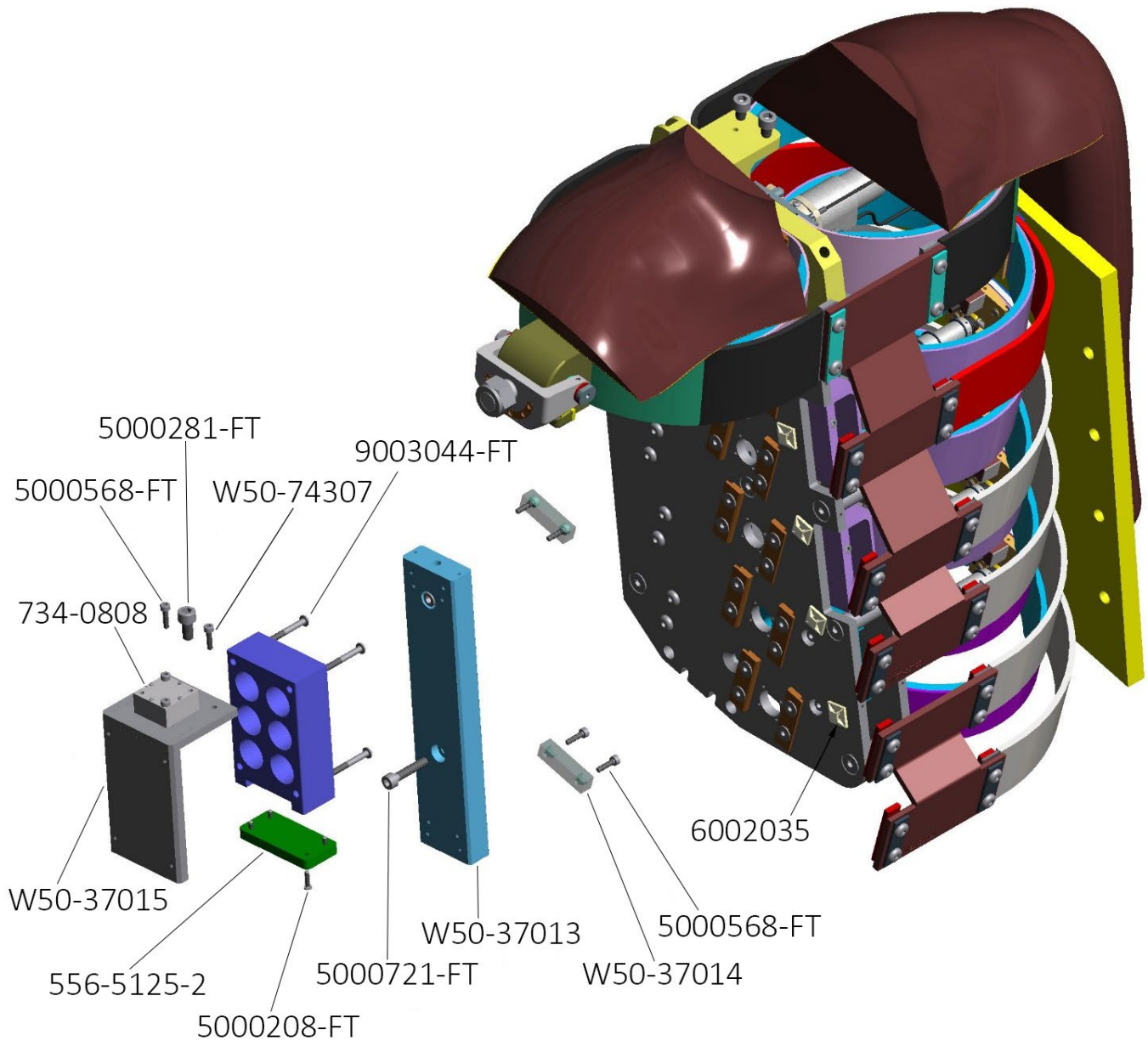
ITEM	QTY	PART NO.	DESCRIPTION
	1	W50-20000	NECK ASSEMBLY
1	1	W50-20101-1	7264C LOWER NECK BRACKET
2	1	W50-20102	UPPER NECK BRACKET
3	1	W50-21001	NECK ASSEMBLY
4	8	5000281-FT	M6 X 1 X 12 LG. SHCS
5	2	W50-20103	SPACER, NECK
6	2	5000008-FT	M6 X 1 X 30 LG. SHCS
7	1	6002036	CABLE TIE MOUNT, #4 SCREW
8	1	5000399-FT	M3 X 0.5 X 6 LG. BHCS SS

9	1	W50-71003	NECK LOAD CELL STRUCTURAL REPLACEMENT
10	1	5000509-FT	M2 X 0.4 X 16 LG. CHMSS SS (Ref)
11	1	W50-22003	NECK, MOLDED
12	4	W50-20016	FLEXION EXTENSION BUFFER
13	2	W50-20002	NECK/HEAD/TORSO INTERFACE PLATE
14	2	175-2004-DN	HALF SPHERICAL SCREW
15	4	W50-20006	NECK BUFFER ASSEMBLY

Thorax Assembly

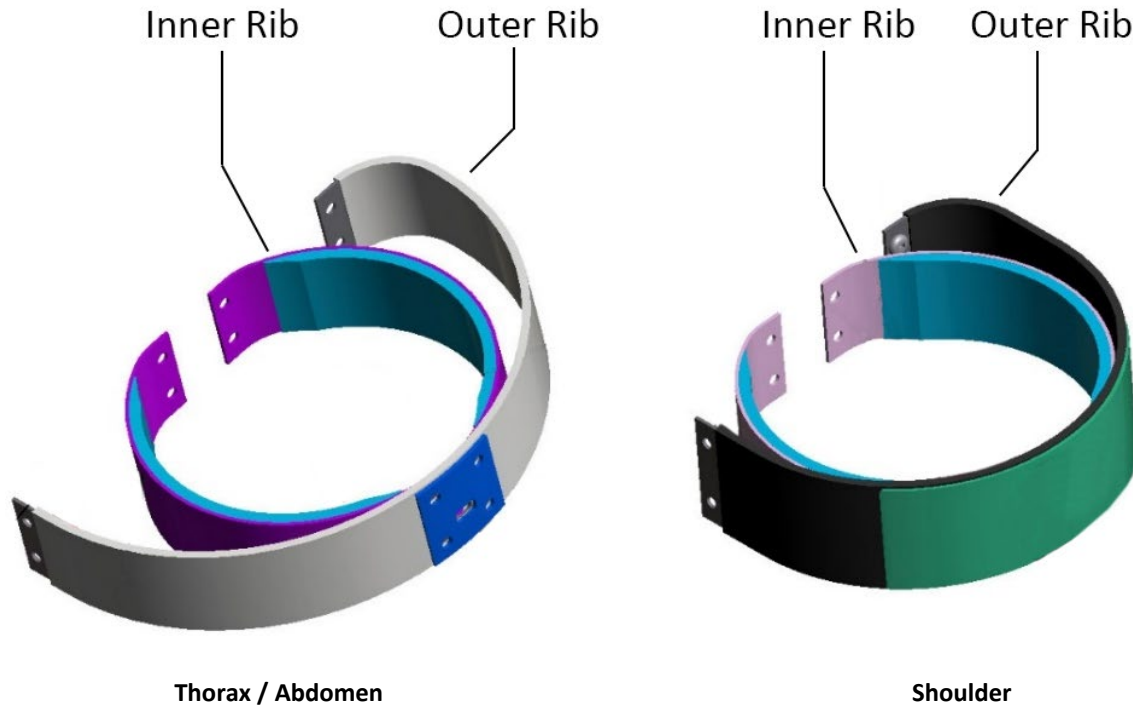






ITEM	QTY	PART NO.	DESCRIPTION
	1	W50-30000	TORSO-SHOULDER/THORAX/ABDOMEN, WORLDSID, TESTED & CERTIFIED
1	1	W50-31000	SPINE BOX ASSEMBLY
2	5	IF-367	IR-TRACC ASSEMBLY, 2D RIB 2-6 (REF)
3	2	W50-32111	THORAX RIB ASSEMBLY 1
4	8	W50-32131	THORAX RIB ASSEMBLY 2 & 3
5	1	W50-35022	STERNUM, THORAX RIB
6	1	W50-35021	RIB COUPLER, ABDOMINAL
7	2	W50-32177	SHOULDER RIB STERNUM MOUNTING STRIP
8	10	W50-32178	THORAX AND ABDOMINAL RIB STERNUM MOUNTING STRIP
9	10	W50-32176	THORAX AND ABDOMINAL RIB MOUNTING STRIP, THREADED

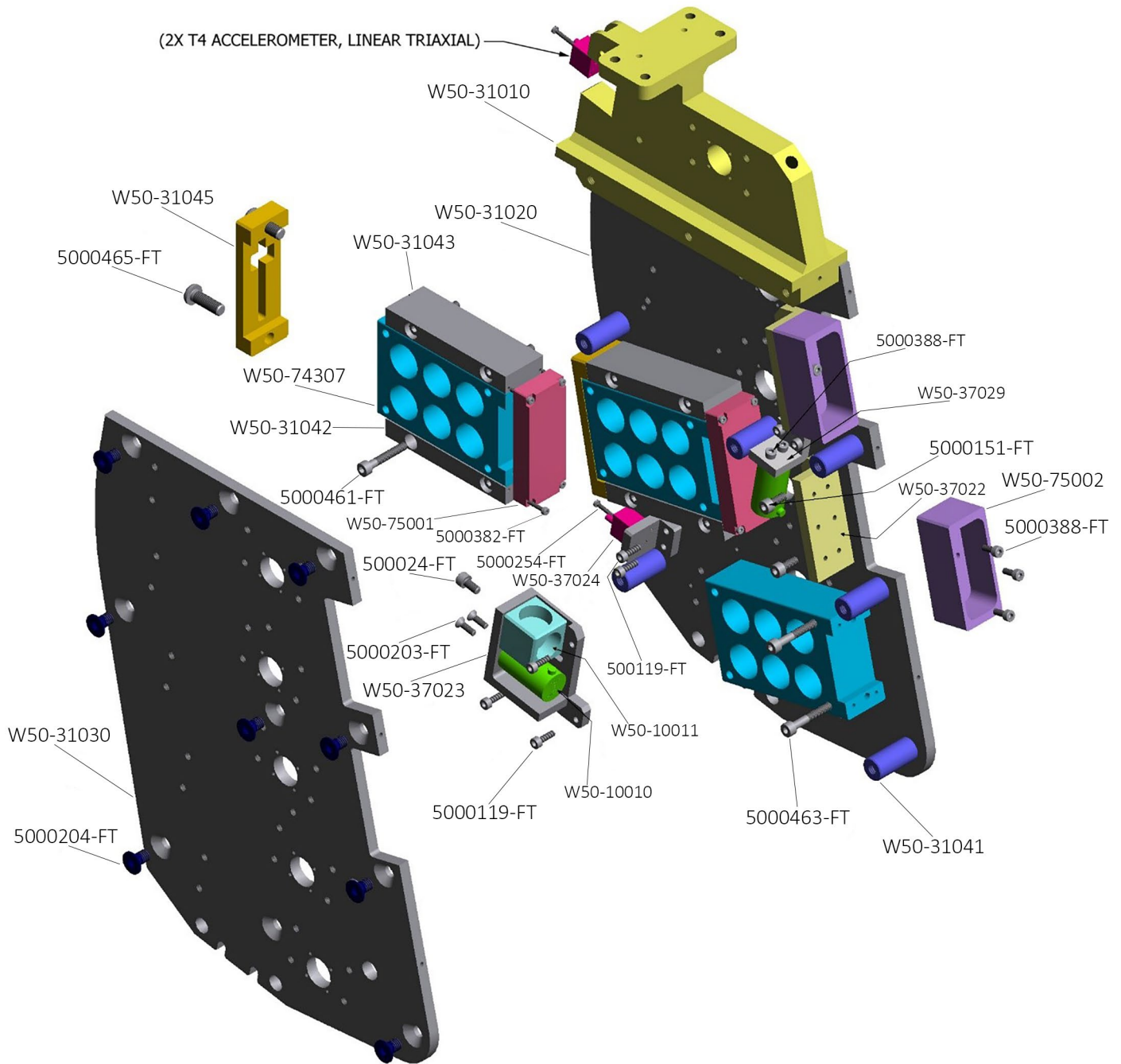
10	24	5000003-FT	M5 X 0.8 X 10 LG. BHCS
11	2	W50-32160-2	SHOULDER RIB ASSEMBLY, INNER BAND
12	6	W50-32150-2	THORAX RIB ASSEMBLY, INNER BAND
13	4	W50-32155-2	ABDOMEN RIB ASSEMBLY, INNER BAND
14	2	W50-32171	SHOULDER RIB MOUNTING BRACKET
15	10	W50-32172	THORAX AND ABDOMINAL RIB ACCELEROMETER MOUNTING BRACKET
16	6	7268C-M1	ACCELEROMETER, LINEAR TRIAXIAL, ENDEVCO 7268C-M1 (REF)
17	2	W50-32001	RIB ASSEMBLY, SHOULDER
18	2	W50-32175	SHOULDER RIB STERNUM MOUNTING STRIP, THREADED
19	10	W50-32173	THORAX AND ABDOMINAL RIB CLAMPING BRACKET
20	8	5000386-FT	M5 X 0.8 X 20 LG. FHCS
21	6	W50-32179	SCREW, RIB IR-TRACC MOUNT
22	2	W50-32010	RIB DOUBLER, SHOULDER
23	1	W50-63111	SHOULDER CLEVIS ASSEMBLY RIGHT
	1	W50-63112	SHOULDER CLEVIS ASSEMBLY LEFT
24	24	W50-32180	CLAMP, DAMPING
25	24	5000084-FT	M5 X 0.8 X 10 LG. FHCS
26	24	5000214-FT	M5 X 0.8 X 6 LG. BHCS
27	1	W50-35023-1	SHOULDER PAD, LEFT
28	1	W50-35023-2	SHOULDER PAD, RIGHT
29	4	5000208-FT	M2.5 X 0.45 X 10 LG. BHCS
30	2	5000462-FT	M12 X 1.75 HEX LOCK NUT ZINC
31	2	W50-35024	THORAX PAD
32	4	5000081-FT	M6 X 1 X 16 LG. SHCS
33	6	5000254-FT	M2 X 0.4 X 16 LG. CHMSS SS
34	8	6002035	CABLE TIE MOUNT, .50 X .50, NYLON, ADHESIVE BACKED
35	1	6002036	CABLE TIE MOUNT, #4 SCREW, NYLON
36	1	5000399-FT	M3 X 0.5 X 6 LG. BHCS SS
37	8	6002055	CABLE TIE, HOOK & LOOP, 11 INCH (NOT SHOWN)
38	1	734-0808	TEMPERATURE LOGGER ASSY (REF)
39	1	W50-37013	BATTERY MOUNTING BRACKET
40	2	W50-37014	SPINE BALLAST STAND OFFS
41	1	W50-37015	DAS MOUNTING BRACKET, THORAX
42	1	W50-74307	DAS STRUCTURAL REPLACEMENT
43	2	5000721-FT	M5 X 0.8 X 25 LG. SHCS
44	40	5000654-FT	M5 X 0.8 X 12 LG. BHCS
45	4	9003044-FT	#6-32 X 1 1/4 LG. BHCS SS
46	6	5000568-FT	M3 X 0.5 X 12 LG. SHCS SS
47	1	556-5125-2	STRUCTURAL REPLACEMENT COVER
48	1	5000281-FT	M6 x 1.0 x 12 LG. SHCS
49	1	IF-368	IR-TRACC ASSEMBLY, 2D SHOULDER (REF)
50	24	5000774-FT	M5 X 0.8 X 10 LG. LHCS
51	2	W50-63100	HALF ARM ASSEMBLY



Spare Part Rib Set Options

PART NO.	DESCRIPTION	No. Inner Ribs	No. Outer Ribs
W50-RS-2	RIB ASSEMBLY, WSID 50th, T/C, BLUE DAMPING	12	12
W50-RSTF-2	THORAX RIB ASSY,FULL SET T/C BLUE DAMPING	6	6
W50-RSTH-2	THORAX RIB ASSY,HALF SET T/C BLUE DAMPING	3	3
W50-ARF-2	ABDOMEN RIB ASSY,FULL SET T/C, BLUE DAMPING	4	4
W50-ARH-2	ABDOMEN RIB ASSY,FULL SET T/C, BLUE DAMPING	2	2
W50-SRF-2	RIB,SHOULDER, FULL SET, BLUE DAMPING, T/C	2	2
W50-SRH-2	RIB,SHOULDER, HALF SET BLUE DAMPING, T/C	1	1

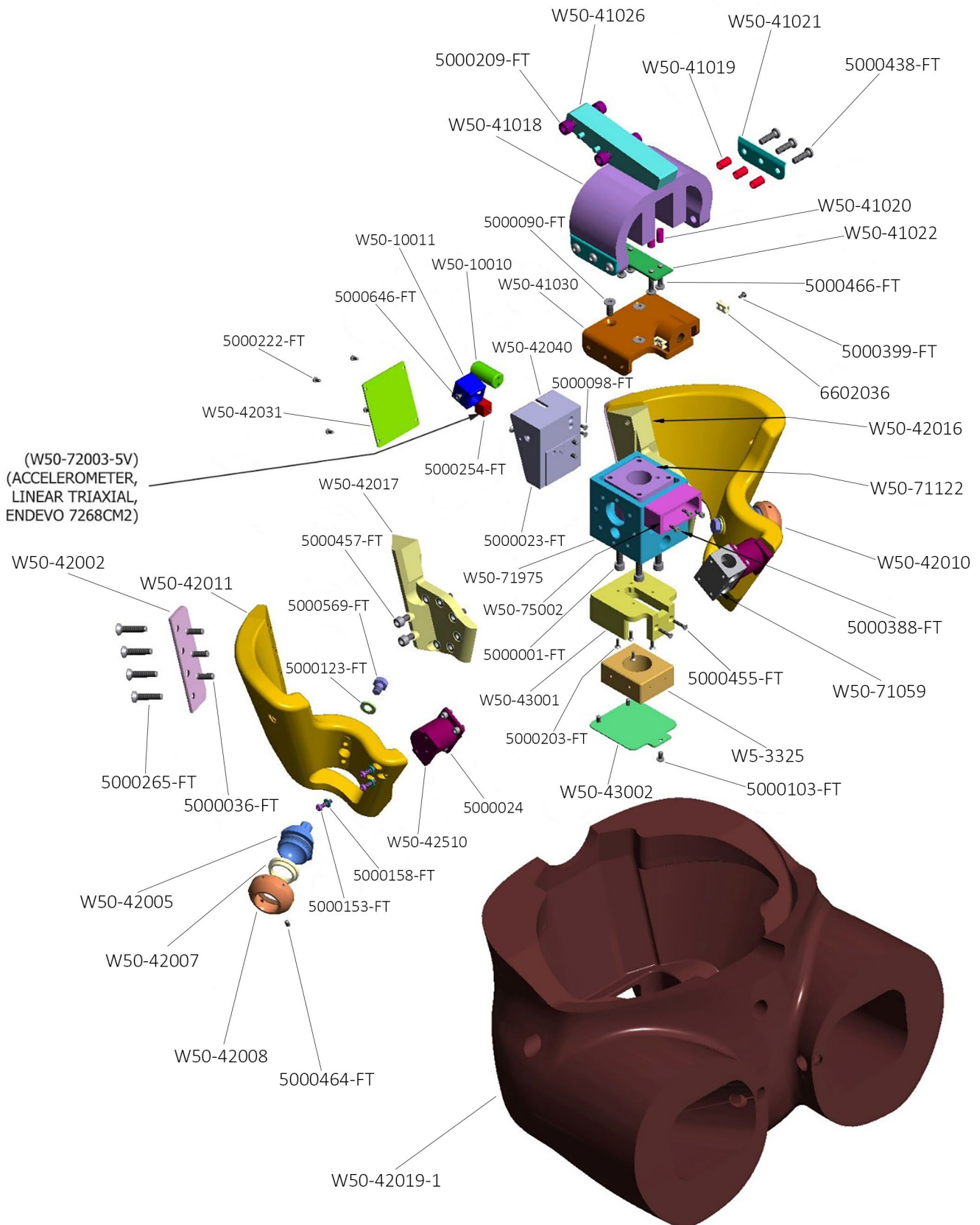
Spine Box Assembly



ITEM	QTY.	PART NO.	DESCRIPTION
	1	W50-31000	SPINE BOX ASSEMBLY
1	2	W50-31042	MOUNTING BRACKET #1
2	1	W50-31010	UPPER BRACKET WELDMENT - SPINE BOX
3	2	W50-75001	INTERPOSER REPLACEMENT
4	1	W50-31020	SIDE PLATE, LEFT

5	7	5000119-FT	M3 X 0.5 X 10 LG. SHCS
6	6	W50-31041	SPACER
7	1	W50-37024	T12 ACCELEROMETER MOUNT
8	1	W50-31030	SIDE PLATE, RIGHT
9	8	5000388-FT	M3 X 0.5 X 8 LG SHCS
10	2	W50-75002	CONNECTOR, HOUSING REPLACEMENT
11	2	W50-37022	BACKUP PLATE MOUNTING BRACKET
12	4	5000151-FT	M4 X 0.7 X 10 LG. SHCS
13	18	5000204-FT	M6 X 1 X 10 LG. FHCS
14	8	5000382-FT	M2 X 0.4 X 12 LG. SHCS
15	2	5000254-FT	M2 X 0.4 X 16 LG. CHMSS SS
16	4	5000465-FT	M6 X 1 X 18 LG. BHCS
17	1	W50-37023	ANGULAR ACCELEROMETER/TILT SENSOR MOUNT BRACKET
18	2	W50-31043	MOUNTING BRACKET #2
19	3	W50-74307	DAS STRUCTURAL REPLACEMENT
20	2	W50-31045	COVER PLATE SPINE BOX
21	1	W50-37029	BRACKET, ROTATIONAL ACCEL MOUNT
22	8	5000461-FT	M4 X 0.7 X 25 LG. SHCS
23	2	5000203-FT	M3 X 0.5 X 10 LG. FHCS
24	1	5000024-FT	M4 X 0.7 X 8 LG. SHCS ZINC
25	2	5000463-FT	M4 X 0.7 X 30 LG. SHCS
26	1	W50-10011	TILT SENSOR STRUCTURAL REPLACEMENT
27	2	W50-10010	ROTATIONAL ACCELEROMETER REPLACEMENT (REF)

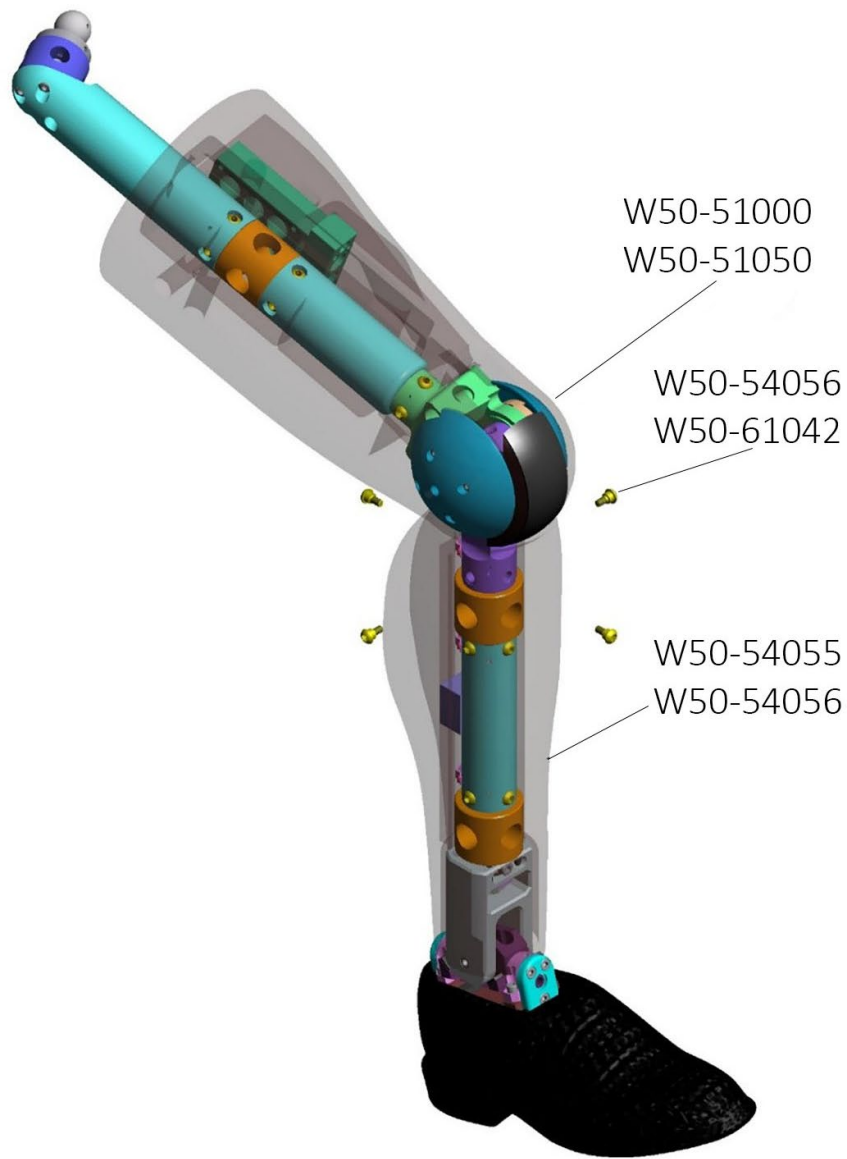
Pelvis Assembly



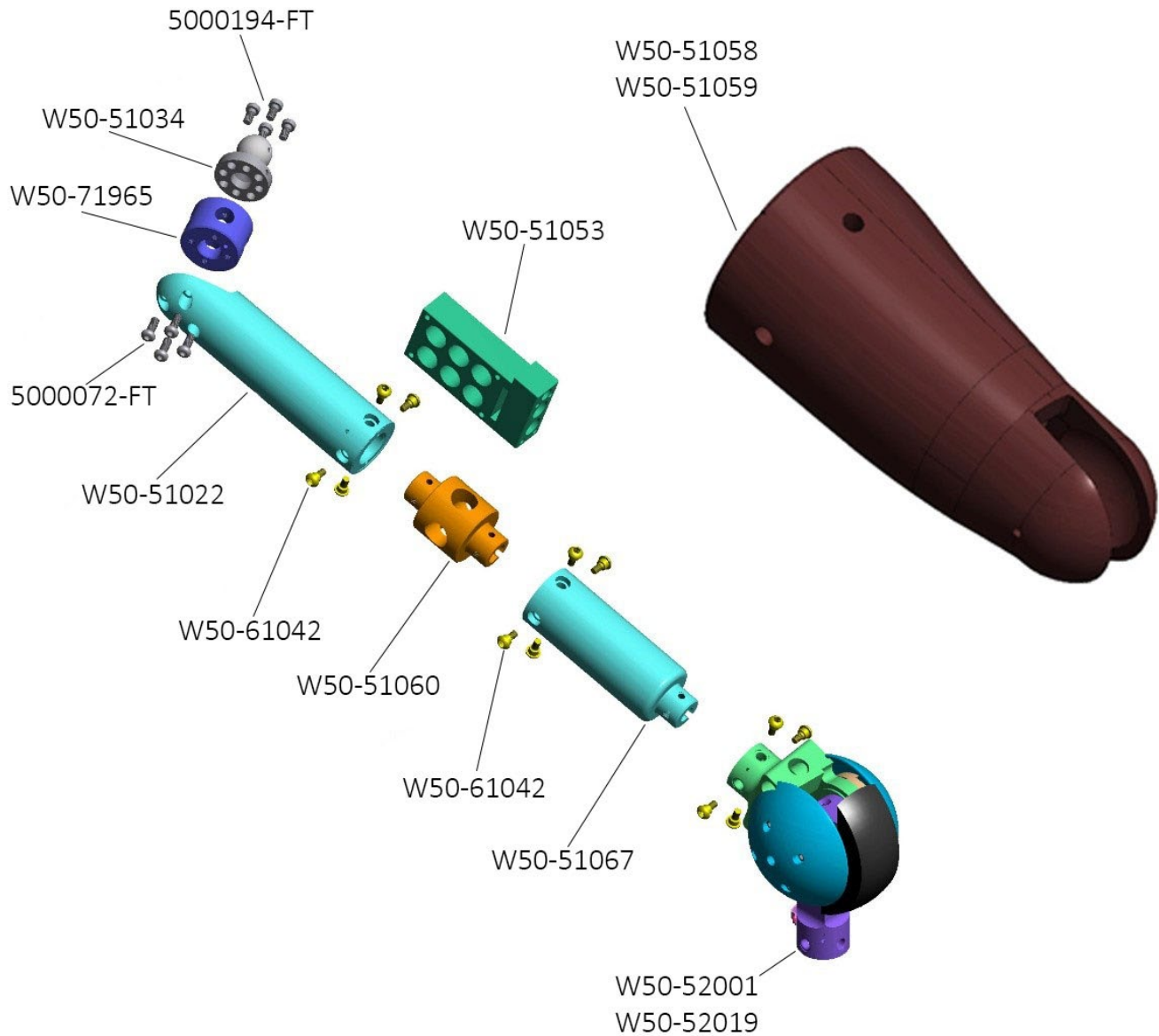
ITEM	QTY.	PART NO.	DESCRIPTION
	1	W50-40000	PELVIS ASSEMBLY TESTED / CERTIFIED
1	1	W50-71975	STRUCTURAL REPLACEMENT SACROILIAC LC
2	1	W50-71122	LUMBAR SPINE STRUCTURAL REPLACEMENT
3	1	W50-42016	SI LC INTERFACE LH
4	1	W50-42017	SI LC INTERFACE RH
5	1	W50-42010	PELVIS BONE LH
6	1	W50-42011	PELVIS BONE RH
7	2	W50-42002	SI LC BACKING PLATE
8	2	W50-42510	PUBIC BUFFER, MOLDED
9	1	W50-71059	STRUCTURAL REPLACEMENT PUBIC LOAD CELL
10	1	W50-42040	INSTRUMENTATION BRACKET PELVIS
11	1	W50-75002	CONNECTOR HOUSING REPLACEMENT
12	1	W50-42019-1	PELVIS FLESH, TESTED/CERTIFIED
13	1	W50-41030	WELDMENT, LOWER LUMBAR MOUNTING BRACKET
14	4	5000090-FT	M6 X 1 X 16 LG. FHCS
15	1	W50-41018	LUMBAR SPINE RUBBER
16	6	W50-41019	BUSHING, LUMBAR
17	2	W50-41021	LUMBAR LOWER CLAMPING PLATE
18	1	W50-41022	LUMBAR UPPER CLAMPING PLATE
19	1	W50-41026	LUMBAR MOUNTING WEDGE
20	4	5000466-FT	M5 X 0.8 X 25 LG. BHCS
21	4	5000209-FT	M8 X 1.25 X 18 LG. SHCS
22	1	W50-10011	SR FOR MSC 260D/GP-M TILT SENSOR
23	1	W50-42031	INSTRUMENTATION COVER PLATE, PELVIS
24	2	W50-42005	HIP JOINT SOCKET
25	2	W50-42007	INNER RING HIP JOINT
26	2	W50-42008	RETAINER, HIP SOCKET
27	6	5000036-FT	M6 X 1 X 20 LG. FHCS SS
28	8	5000265-FT	M6 X 1 X 30 LG. FHCS
29	1	5000646-FT	M4 X 0.7 X 8 LG. FHCS
30	3	5000023-FT	M4 X 0.7 X 10 LG. FHCS
31	4	5000222-FT	SCREW, CHEESE M3 X 6
32	2	5000123-FT	M8 FLAT WASHER PLAIN ZINC
33	8	5000024-FT	M4 X 0.7 X 8 LG. SHCS ZINC
34	6	5000155-FT	M4 FLAT WASHER PLAIN ZINC
35	6	5000153-FT	M4 X 0.7 X 16 LG. BHCS
36	16	5000457-FT	M6 X 1 X 10 LG. SHCS
37	3	5000388-FT	M3 X 0.5 X 8 LG. SHCS
38	2	5000569-FT	M8 X 1.25 X 10 LG. HHCS ZINC
39	6	5000438-FT	M6 X 1 X 20 LG. BHCS
40	1	5000254-FT	M2 X 0.4 X 16 LG. CHMSS SS
41	6	5000464-FT	M4 X 0.7 X 6 LG. SSSFP

42	4	5000001-FT	M6 X 1 X 20 LG. SHCS
43	4	W50-41020	BUSHING, LUMBAR SPINE, TOP
44	2	6002036	CABLE TIE MOUNT, #4 SCREW
45	2	5000399-FT	M3 X 0.5 X 6 LG. BHCS SS
46	1	W50-10010	ANGULAR ACCELEROMETER REPLACEMENT, ENDEVCO 7302BM4
47	2	5000098-FT	M3 X 0.5 X 6 LG. FHCS
48	1	W50-43001	BATTERY CONTAINER
49	4	5000203-FT	M3 X 0.5 X 10 LG. FHCS
50	1	W5-3325	BATTERY REPLACEMENT
51	1	W5-3326	THERMAL PAD (NOT SHOWN)
52	1	W50-43002	BATTERY COVER
53	3	5000103-FT	M4 X 0.7 X 8 LG. BHCS
54	2	5000455-FT	M3 X 0.5 X 16 LG. FHCS

Leg Assembly

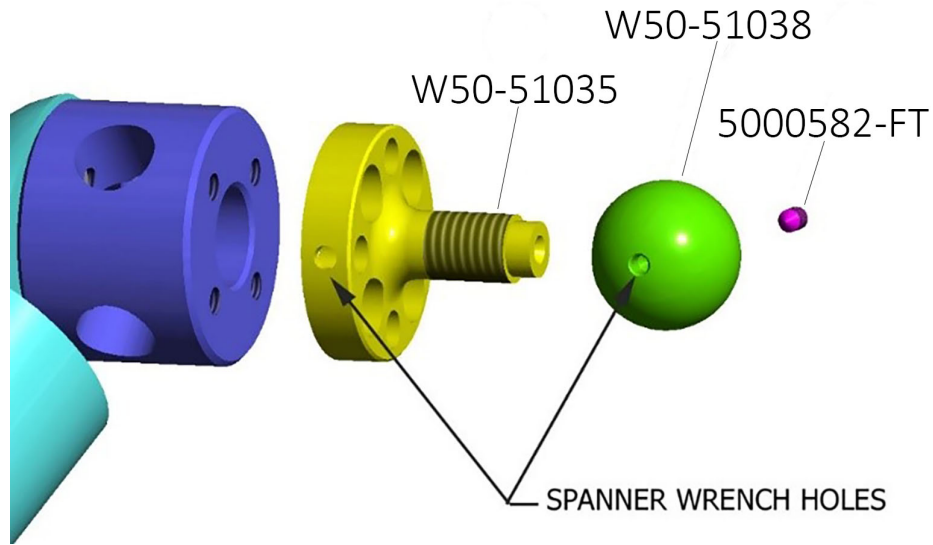


ITEM	QTY	PART NO.	DESCRIPTION
	1	W50-50000	LEG ASSEMBLY, RIGHT, WSID
	1	W50-50001	LEG ASSEMBLY, LEFT, WSID
1	1	W50-51000	UPPER LEG ASSEMBLY-RIGHT
		W50-51050	UPPER LEG ASSEMBLY-LEFT (not shown)
2	1	W50-54055	RIGHT LOWER LEG, ANKLE, FOOT ASSY
		W50-54056	LEFT LOWER LEG, ANKLE, FOOT ASSY (not shown)
3	4	W50-61042	MODIFIED BHSS M6 THREAD



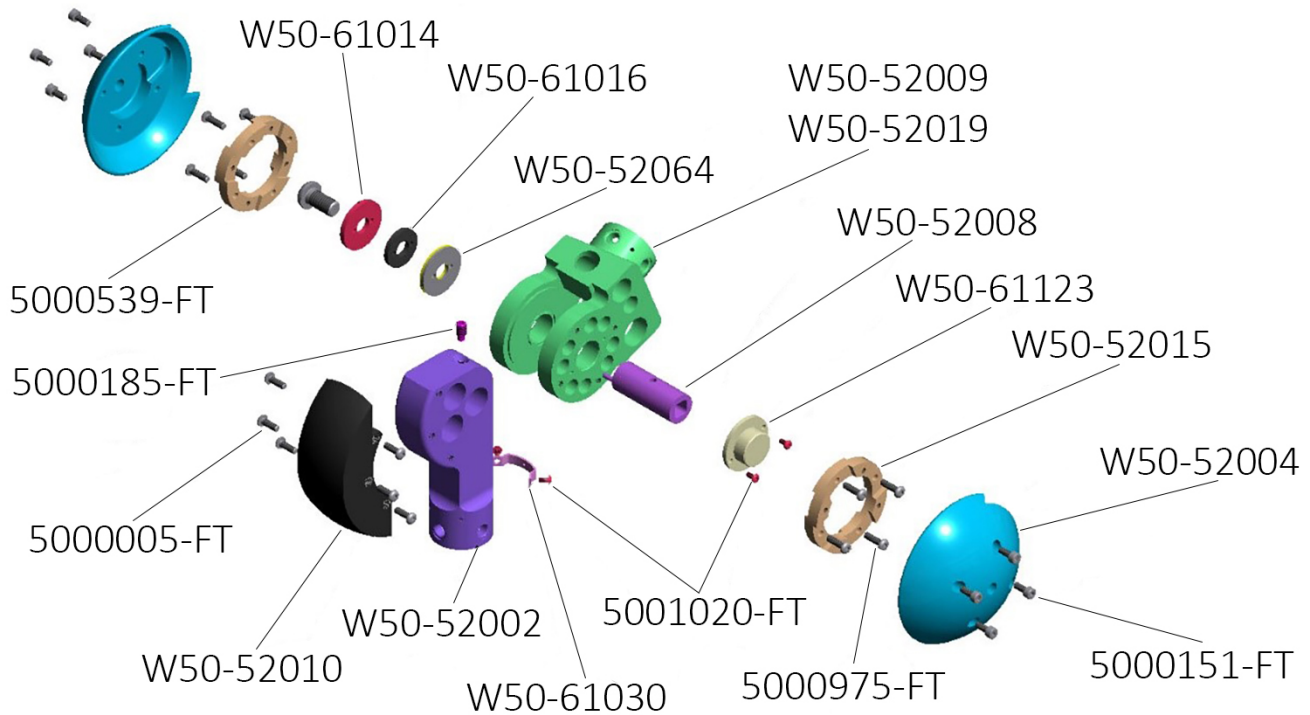
ITEM	QTY	PART NO.	DESCRIPTION
1	1	W50-52001	KNEE ASSEMBLY-RIGHT
		W50-52019	KNEE ASSEMBLY-LEFT (not shown)
2	1	W50-51067	LEG TUBE ASSEMBLY
3	4	W50-51060	UNIVERSAL LEG L.C. S.R. BODY
4	1	W50-51022	TROCHANTER ASSEMBLY-RIGHT
5	1	W50-71965	STRUCTURAL REPLACEMENT, FEMORAL NECK L.C.
6	1	W50-51034	FEMORAL NECK ASSEMBLY
7	12	W50-61042	MODIFIED BHSS M6 THREAD
8	4	5000072-FT	M6 X 1 X 16 LG. BHCS
9	4	5000194-FT	SCREW, LWSHCS M6 X 1 X 12 MM
10	1	W50-51053	DAS S.R.ASSEMBLY
11	1	W50-51058	UPPER LEG FLESH-RIGHT
	1	W50-51059	UPPER LEG FLESH-LEFT (not shown)

Femoral Neck Assembly



ITEM	QTY	PART NO.	DESCRIPTION
1	1	W50-51035	FEMORAL NECK
2	1	W50-51038	FEMORAL BALL
3	1	5000582-FT	SCREW SSCP M4 X 0.7 X 6 18-8 SS CONE PT

Knee Assembly

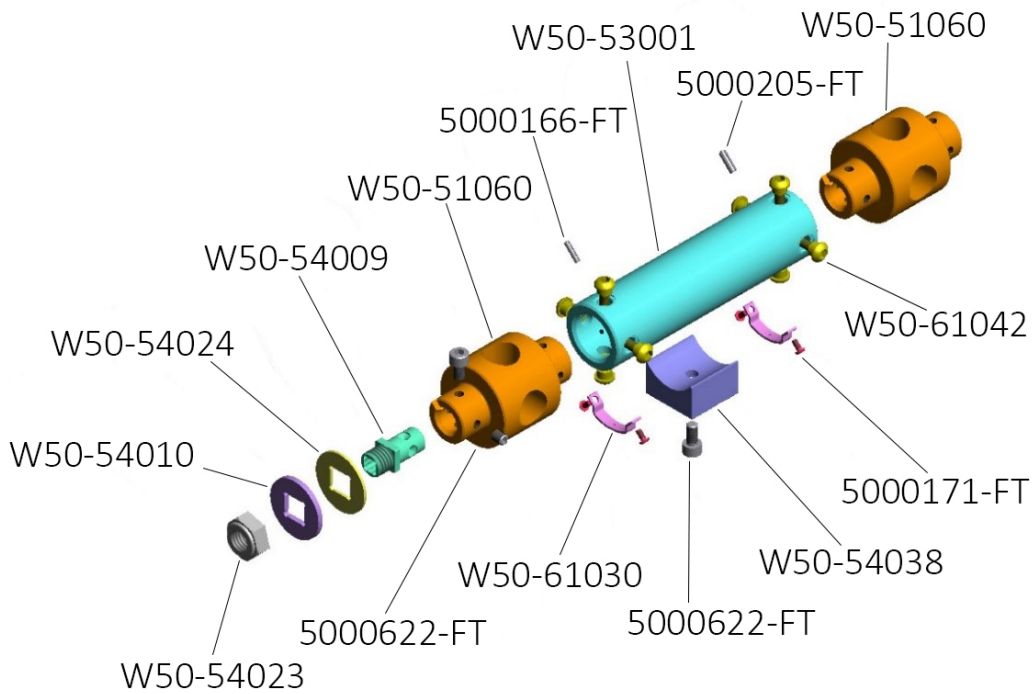


ITEM	QTY	PART NO.	DESCRIPTION
1	1	W50-52009	KNEE CLEVIS ASSEMBLY, RIGHT
	1	W50-52019	KNEE CLEVIS ASSEMBLY, LEFT (not shown)
2	1	W50-52008	KNEE SHAFT ASSEMBLY
3	1	W50-61123	ELBOW POTENTIOMETER ASSEMBLY - S.R.
4	1	W50-52064	BRAKE WASHER ASSEMBLY
5	1	W50-61016	COMPRESSION WASHER
6	1	W50-61014	ELBOW CLAMP WASHER
7	2	W50-52015	STRUCTURAL REPLACEMENT KNEE CONTACT L.C.
8	1	W50-52002	KNEE BONE ASSEMBLY
9	1	W50-52010	MOLDED KNEE PAD ASSEMBLY
10	2	W50-52004	KNEE COVER
11	1	W50-61030	CABLE GUIDE
12	8	5000151-FT	M4 X 0.7 X 10 LG. SHCS
13	4	5001020-FT	M3 X 0.5 X 6 LG. BHCS
14	1	5000185-FT	M6 X 1 X 12 LG. SSDP
15	6	5000005-FT	M4 X 0.7 X 12 LG. BHCS
16	1	5000539-FT	M10 X 1.5 X 20 LG. BHCS
17	8	5000975-FT	M4 X 0.7 X 14 LG. BHCS

Lower Leg Assembly

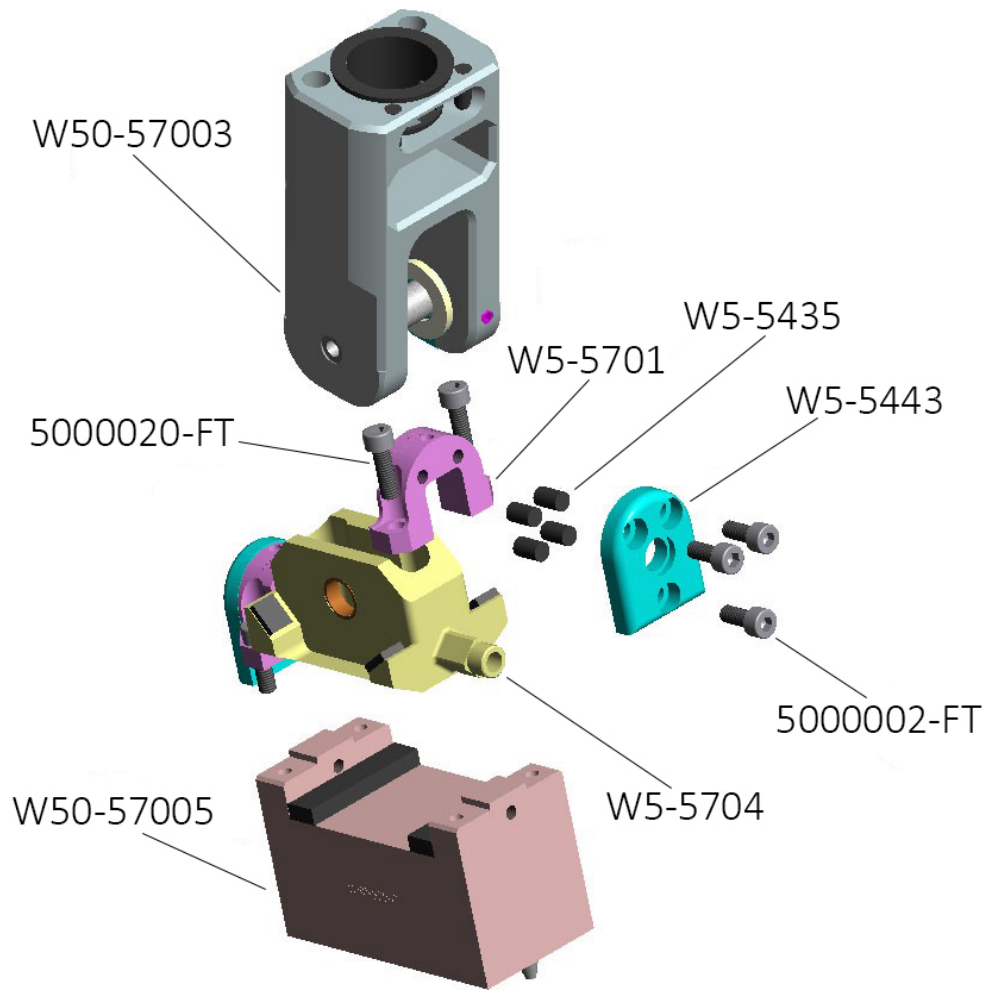


ITEM	QTY	PART NO.	DESCRIPTION
1	1	W50-57000	ANKLE ASSEMBLY HARMONIZED
2	1	W50-54053	LOWER LEG ASSEMBLY
3	1	W50-53002	LOWER LEG FLESH
4	4	5000020-FT	SCREW, SHCS M5 X 0.8 X 16 MM
5	1	W50-55005	SHOE, RIGHT
	1	W50-55004	SHOE, LEFT (not shown)

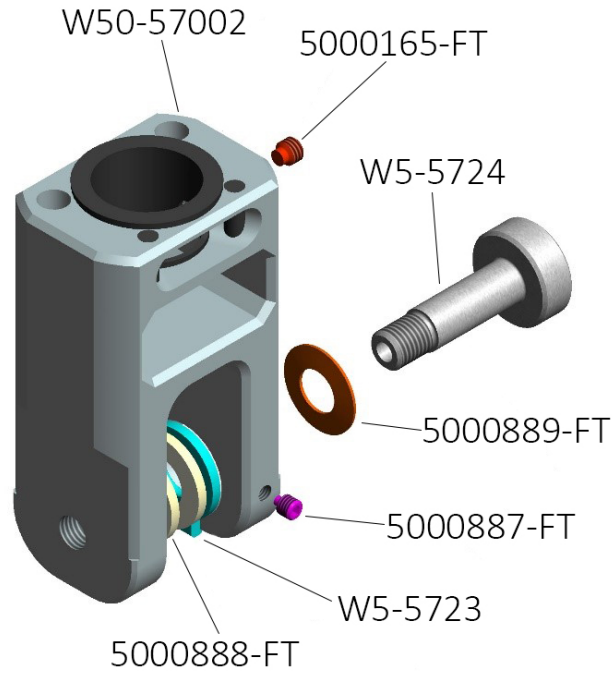


ITEM	QTY	PART NO.	DESCRIPTION
1	1	W50-53001	LOWER LEG TUBE
2	2	W50-51060	UNIVERSAL LEG L.C. S.R. BODY
3	1	W50-54009	Z-PIVOT PIN
4	1	W50-54024	Z-AXIS ANTI-RATTLE WASHER
5	1	W50-54010	Z-AXIS ROTATIONAL WASHER
6	1	W50-54023	Z-AXIS NUT
7	1	W50-54041	Z-AXIS RADIAL LIMIT SCREW
8	4	5000171-FT	SCREW, BHCS M3 X 0.5 X 6 MM
9	1	5000281-FT	M6 X 1 X 12 LG. SHCS
10	1	W50-54038	ORIENT BLOCK – LEG FLESH
11	3	5000622-FT	M6 X 1 X 8 LG. SSSCP
12	1	5000166-FT	M3 X 12 LG. ROLL PIN
13	1	5000205-FT	M4 X 12 LG. ROLL PIN SS
14	8	W50-61042	MODIFIED BHSS M6 THREAD
15	2	W50-61030	CABLE GUIDE

Ankle Assembly



ITEM	QTY	PART NO.	DESCRIPTION
1	1	W5-5704	ANKLE JOINT ASSEMBLY
2	8	W5-5435	X-VERSION RESISTIVE ELEMENT
3	2	W5-5443	REAR BEARING COVER
4	2	W5-5701	RETAINER BRACKET
5	1	W50-57005	BASE PLATE ASSY HARMONIZED
6	1	W50-57003	Y-VERSION ASSEMBLY HARMONIZED
7	6	5000002-FT	M5 X 0.8 X 12 LG. SHCS
8	4	5000020-FT	M5 X 0.8 X 16 LG. SHCS

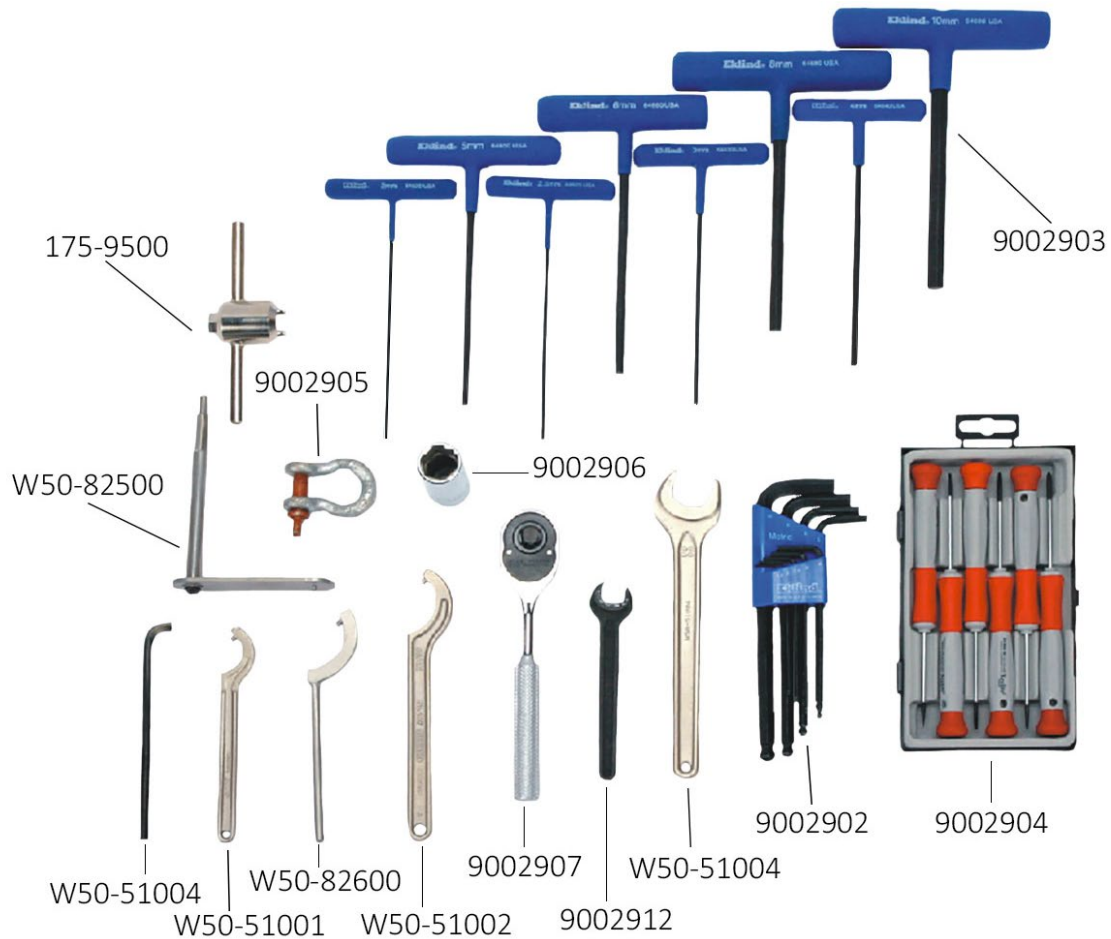


ITEM	QTY	PART NO.	DESCRIPTION
1	1	W50-57002	ANKLE CLEVIS ASSY HARMONIZED
2	1	5000165-FT	M6 X 1 X 6 LG. SSSDP
3	1	W5-5724	ANKLE FRICTION SHOULDER BOLT
4	1	5000889-FT	SPRING, BELLEVILLE DISC, 11.2 ID X 22.5 OD X 0.8 THK.
5	1	W5-5723	STOP RING
6	2	5000888-FT	WASHER, FLAT 13 ID X 24 OD X 2.5 THK, NYLON
7	1	5000887-FT	M5 X 0.8 X 6 LG. SSSNP SS

Clothes

Part Number	Description	Qty. Req'd Per Dummy
W50-80100	WORLDSID SUIT (STANDARD)	1
W50-80200	WORLDSID SUIT (SLEEVELESS)	1





Tool Kit

ITEM	QTY	PART NO.	DESCRIPTION
	1	W50-TOOL-KIT	
1	1	6001820	TOOLBOX, PLASTIC – <i>NOT SHOWN</i>
2	1	9002902	ALLEN WRENCH SET
3	1	9002903	T-HANDLE SET
4	1	9002904	SCREWDRIVER SET
5	1	9002905	ANCHOR, SHACKLE
6	1	W50-84100	LIFTING BRACKET ASSEMBLY – <i>NOT SHOWN</i>
7	1	W50-82500	H-POINT LOCATOR ASSEMBLY
8	1	W50-82600	C-WRENCH
9	1	9002906	SOCKET, DEEPWELL, 19 MM, #5849A45
10	1	9002907	WRENCH, 3/8" SQUARE DRIVE REVERSIBLE RATCHET
11	1	W50-51004	22 MM OPEN END WRENCH, MODIFIED
12	1	W50-51003	4 MM HEX KEY WRENCH, MODIFIED
13	1	W50-51002	SPANNER WRENCH, 40-42 MM
14	1	W50-51001	SPANNER WRENCH, 25 - 28 MM, MODIFIED
15	1	9002912	WRENCH, 13 MM, OPEN END
16	1	175-9500	EUROSID NECK COMPRESSION TOOL