

WorldSID-50M Head Core Update

Publication Date: August 2018

Humanetics has updated the head core of the WorldSID-50M to prevent the mounting of the tri-axial accelerometer upside down.

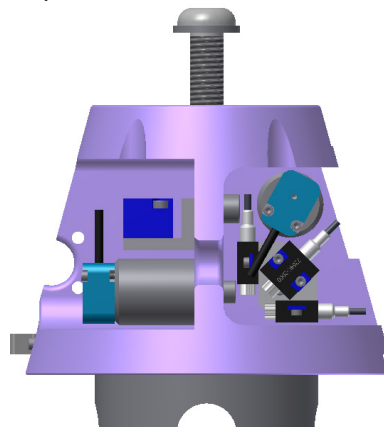
Background

With the old design, users were able to use both mounting holes to assemble the tri-axial accelerometer to the head core. One of the mounting holes, that was intended for the uniaxial accelerometer mount, would mount the tri-axial accelerometer upside down. Humanetics updated the mounting hole pattern in order to eliminate the ability to install the tri-axial accelerometer upside down.

Updated Head Core

Changes made:

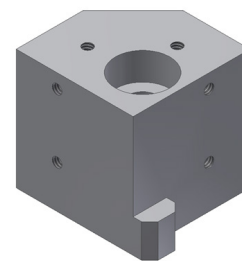
- Updated the mounting hole for the uniaxial accelerometer mounting block (M2 to an M3)
- Released a new uniaxial accelerometer mounting block (W50-00103) and mounting block kit (W50-00113)
- Released a new head core (W50-10007-1) and no longer selling the old design (W50-10007)



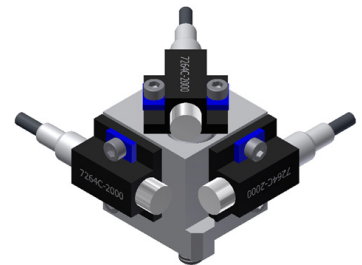
W50-10000



** If a customer orders a new dummy or headcore and plans to use a uniaxial accelerometer in the head, the W50-00113 mounting block kit will need to be ordered as well.*



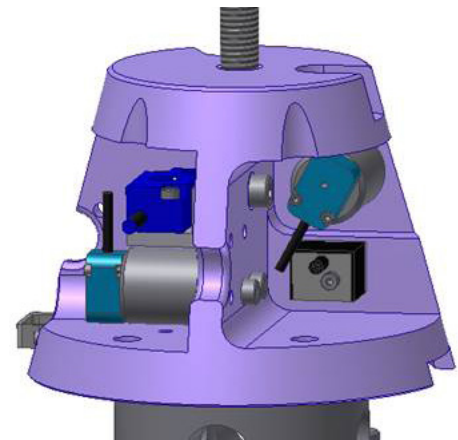
W50-00103



W50-00113

Existing Head Core

To avoid mounting errors on the existing head core design when installing the triaxial accelerometer, ensure that it is oriented as shown below. The etchings/markings on the accelerometer should be facing downwards. If the accelerometer is installed incorrectly, this will lead to incorrect test results.

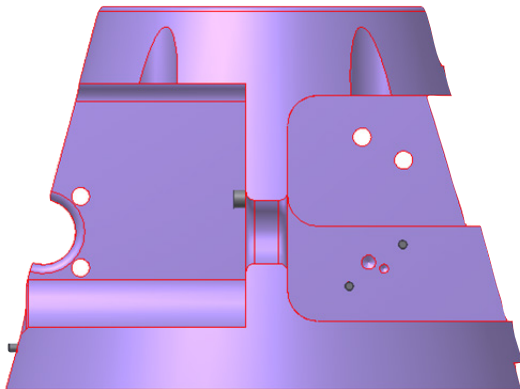
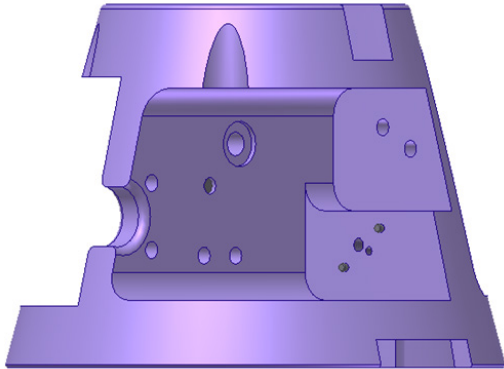


Previous Design (W50-10007) Head Core

WorldSID-50M Head Core Update (Con't)

New Head Core

New Head Core	
W50-10007-1	HEAD CORE ASSEMBLY



W50-10007-1

For questions please contact your Account Manager or Customer Service Representative.